

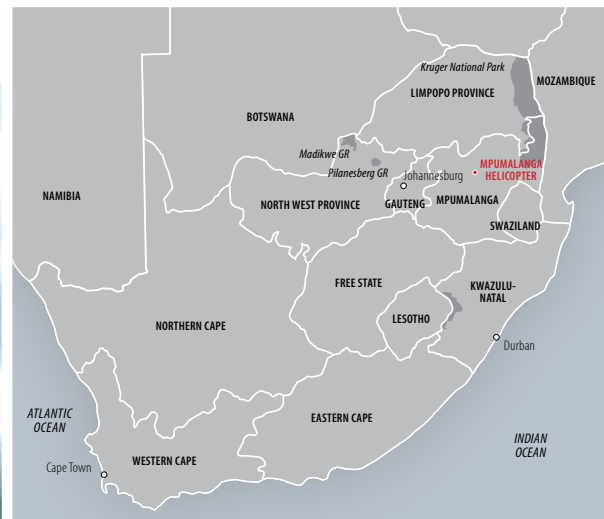


# Mpumalanga HELICOPTER CO.

HAZYVIEW | MPUMALANGA

Experience  
breathtaking  
panoramic  
views...

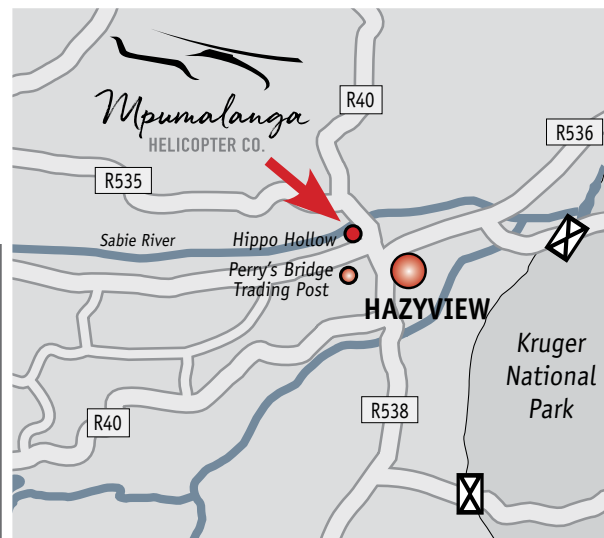
*Swoop over deep and mysterious gorges, hover above roaring rivers and cascading waterfalls and view the fascinating and dramatic rock formations of the Blyde River Canyon.*

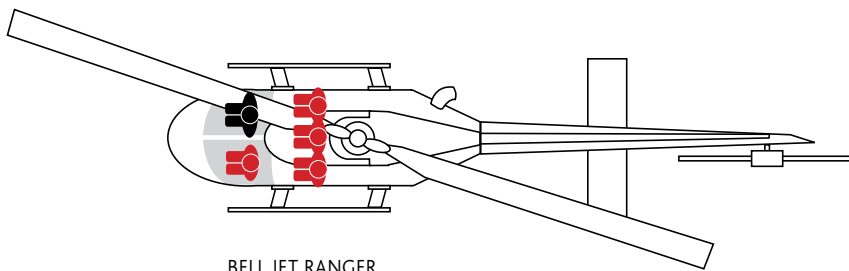


BASED IN HAZYVIEW, THE MPUMALANGA HELICOPTER CO. OFFERS SCENIC FLIGHTS, TRANSFERS & CHARTERS IN THE BEAUTIFUL MPUMALANGA LOWVELD.

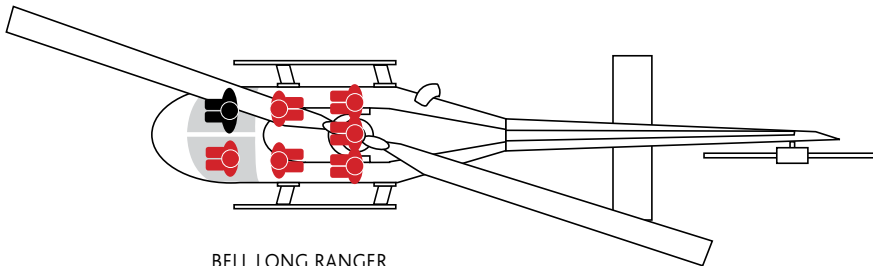
[www.mhelicopter.co.za](http://www.mhelicopter.co.za)

*Seasons in Africa*  
ADVENTURES • HOTELS • LODGES





BELL JET RANGER



BELL LONG RANGER

## HELICOPTER FLEET

- **BELL JET RANGER (B206III)**

– 4 SEATER

The Bell 206 Jet Ranger can seat four people (plus the Pilot); one passenger up front, and three in the back.

- **BELL LONG RANGER (206L3)**

– 6 SEATER

The Bell 206 Long Ranger can seat six passengers (plus the Pilot); one in the front and five in the back.

## HELICOPTER TRANSFERS & CHARTERS

- Tailor made helicopter charters and transfers to and from the Kruger Mpumalanga International Airport (MQP), Kruger National Park's Skukuza Airport and Eastgate Airport in Hoedspruit.
- The service is available to any of the hotels in the area and to the exclusive game lodges within the nearby private reserves (provided there is a suitable heli-pad).
- Custom charters can be designed and quoted on request.





- TIMBAVATI**
- 47 Simbavati
  - 48 King's Camp
  - 49 Tando Tula
  - 50 Umlani
  - 51 Kambaku River Sands
  - 52 Kambaku Safari Lodge
  - 53 & Beyond
  - 54 Ngala Safari Lodge
  - 55 Shindzela
  - 55 Makanyhi Lodge
  - 56 Ngala Tented Camp

- THORNBUSH**
- 35 Royal Malewane
  - 36 Jackalberry Lodge
  - 37 Thornybush Game Lodge Main Camp
  - 38 Chapungu Luxury Tented Camp
  - 39 Shumbalala Game Lodge
  - 40 Serondella Lodge
  - 41 Thornybush Waterside Lodge

- SABI SANDS**
- 18 Arathusa Safari Lodge
  - 19 Djuma Vuyatela Lodge
  - 20 Cheetah Plains Lodge
  - 21 Simbambili Game Lodge
  - 22 Nkorho Bush Lodge
  - 23 Chitwa Chitwa Game Lodge
  - 24 Jaci's Sabi Lodge
  - 25 Elephant Plains

- SABI SANDS**
- 1 Dulini River Lodge
  - 2 Dulini Lodge
  - 3 & Beyond Kirkman's Kamp
  - 4 Ulusaba Safari Lodge
  - 5 Ulusaba Rock Lodge
  - 6 Leopard Hills Private Game Reserve
  - 7 Dulini Leadwood Lodge
  - 8 Savanna Private Game Reserve
  - 9 Idube Private Game Reserve
  - 10 Londolazi Tree Camp
  - 11 Londolazi Pioneer Camp
  - 12 Londolazi Private Granite Suite Camp
  - 13 Londolazi Varty Camp
  - 14 Londolazi Founder's Camp
  - 15 Singita Boulders Lodge & Singita Ebony Lodge
  - 16 Singita Castleton Camp
  - 17 Inyati Private Game Reserve

- SABI SANDS**
- 26 Sabi Sabi Selati Camp
  - 27 Sabi Sabi Bush Lodge
  - 28 Sabi Sabi Earth Lodge
  - 29 Sabi Sabi Little Bush Camp
  - 30 Lion Sands River Lodge
  - 31 Lion Sands Ivory Lodge
  - 32 Lion Sands 1933 Lodge
  - 33 Notten's Bush Camp
  - 34 Umkumbi Safari Lodge



## SCENIC HELICOPTER FLIGHTS

### CASCADES SCENIC FLIGHT

DURATION OF EXCURSION: *45 minutes*

#### HIGHLIGHTS

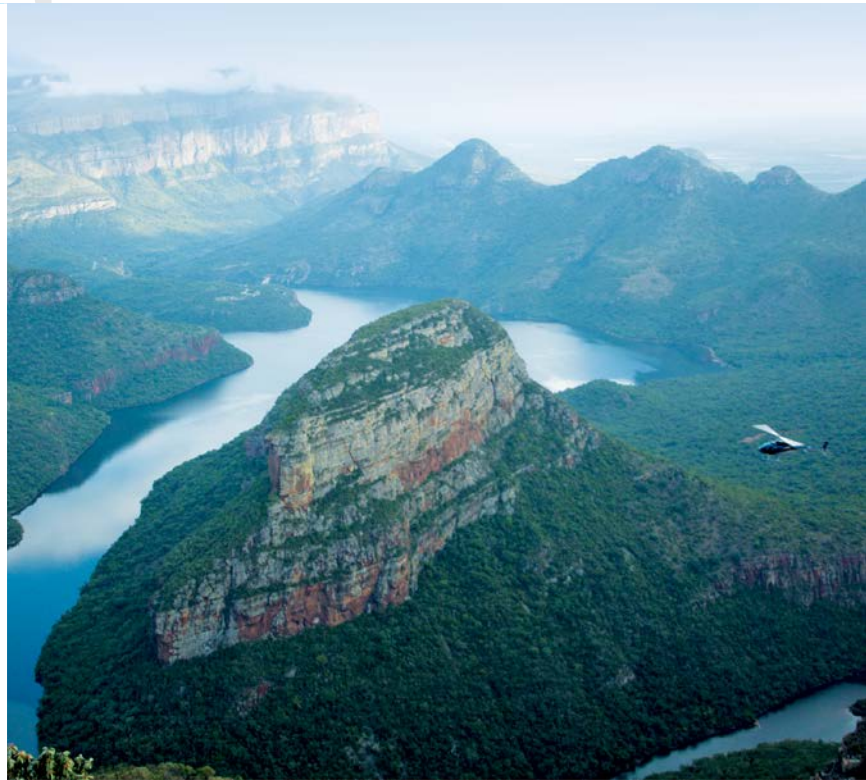
- Follow the meandering Sabie River Valley along the edge of the Escarpment.
- Fly over the extraordinary 30-metre high pinnacle.
- Breathtaking views of the Lisbon, Berlin, Forest, Cascades and Mac Mac Falls.



Departing from Hippo Hollow Hotel in Hazyview the helicopter shadows the Sabie River Valley along the edge of the Escarpment to the 30-metre-high Pinnacle; an impressive weathered column of free-standing sandstone rising above the tangle of indigenous forests.

The dramatic views hovering over the cascading waterfalls and towering cliffs present a treasure of magnificent photographic possibilities. Experience a stunning eagle's eye view of the breathtaking Lisbon Falls plummeting down a 92-metre cliff in four torrents and the Mac Mac Falls which split into two splendid streams before plunging into the forested gorge below.

The most glorious sweeping views of the beautiful Mpumalanga Lowveld emerge as the helicopter completes a last swooping circle over the Panorama Gorge before flying back to Hippo Hollow.



## SCENIC HELICOPTER FLIGHTS

### CASCADES & CANYON DELIGHT

DURATION OF EXCURSION: *1 hour*

#### HIGHLIGHTS

- Explore the Lisbon, Berlin, Forest, Cascades and Mac Mac Falls.
- Dramatic views of the Panorama Gorge and Three Rondawels.
- Experience the striking rock formations of the legendary Blyde River Canyon.

Taking off from Hippo Hollow Hotel in Hazyview, we follow the Sabie River Valley along the edge of the Escarpment to the impressive 30-metre-high Pinnacle mysteriously rising above the indigenous forest. Swooping over winding rivers, deep gorges, lush valleys and cascading waterfalls tumbling in seemingly endless torrents; this breathtaking flight offers an abundance of spectacular photographic opportunities.

The flight will continue along the escarpment with incredible panoramic views of the Mpumalanga Lowveld, the Three Rondawels and the fascinating and dramatic rock formations of the 1 000-metre-deep, 30-kilometre-long Blyde River Canyon (the third deepest and greenest Canyon in the World).





## SCENIC HELICOPTER FLIGHTS

### CASCADES & CANYON SPECTACULAR PICNIC FLIGHT

DURATION OF EXCURSION:

*From Sabi Sand / Timbavati Area : 2 hours*

*From Hazyview Area : 1½ hours*

#### HIGHLIGHTS

- Soar above raging rivers, sheer cliffs and magnificent waterfalls cascading into deep gorges.
- Explore the Blyde River Canyon, the third deepest and greenest canyon in the world.
- Swoop over the Pinnacle and land at the ultimate picnic site with magnificent views of the Lowveld.



This exhilarating helicopter flight swoops over deep mysterious gorges, shadowing meandering rivers and exploring lush valleys bursting with vegetation and colour. The dramatic views of cascading waterfalls and sheer cliffs create an abundance of magnificent photographic possibilities. Experience a stunning eagle's eye view of the breathtaking Lisbon Falls plummeting down a 92-metre precipice in four torrents before flying over the legendary Cascade, Berlin, Mac-Mac and Forest Falls.

The flight will continue along the escarpment revealing spectacular views of the Panorama Gorge and soaring over the fascinating rock formations of the 1 000-metre-deep, 30-kilometre-long Blyde River Canyon. The impressive Pinnacle and curious Three Rondawels provide the perfect finale before landing at the ultimate picnic site on the mountain. Indulge in a delicious picnic accompanied by fine South African sparkling wine whilst soaking up the endless vistas of the glorious Mpumalanga Lowveld.

*We can collect passengers from any of the hotels and game lodges in Timbavati, Manyeleti and Sabi Sand area (provided there is a suitable heli-pad). There are two scheduled flights per day, although departure times can be flexible so as not to interfere with game drives.*



*Speedy Air Transfers afford Guests the time for a*

## ROUND OF GOLF WHILE ON SAFARI

Golfing enthusiasts visiting game lodges in Mpumalanga can play a round of golf at a world-famous golf course and be back at the lodge in time to enjoy the late afternoon game drive experience.

Mpumalanga Helicopter Co. provide speedy air transfers in style for up to 10 golfers, from the closest airstrip or helicopter pad to the game lodge, to one of three world renowned golf courses. A wonderful opportunity to slip in a round of golf and also a fabulous way to see the magnificent beauty of the Mpumalanga Lowveld from the air.

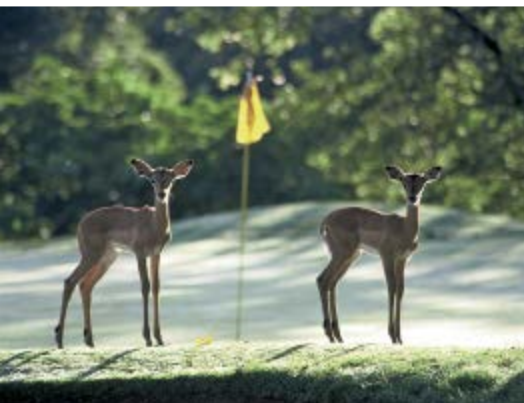


### LEOPARD CREEK COUNTRY CLUB

Situated on the banks of the Crocodile River near Malelane and designed by one of the world's greatest golfers, Gary Player, Leopard Creek Country Club delivers a world-class golfing experience.

### HANS MERENSKY GOLF COURSE

Share a round of golf with resident wildlife visitors in a unique bushveld atmosphere at the award-winning Hans Merensky Golf Course bordering the Kruger National Park.



### HIGHLAND GATE GOLF ESTATE

Nestled in the picturesque Steenkampberg mountain range near Dullstroom, the Highland Gate Golf Estate, Ernie Els' signature golf course is on the bucket list for many local and international golfers.



## TERMS & CONDITIONS

- Rates include VAT at the current rate of 15%.
- Mpumalanga Helicopter Company cannot be held responsible for departure delays due to mechanical related matters or inclement weather.
- Bookings will be confirmed upon receipt of full pre-payment.
- A 50% cancellation fee will be levied for cancellations received 7 days prior to flight, and 100% cancellation fee if cancelled less than 72 hours prior to the activity.
- All quotes are subject to fuel price increases due to Rand/Dollar exchange rate fluctuations.
- Quotations are valid for the specified routing and number of passengers.
- Quotations are subject to adjustment should the services originally quoted not be available at the time of booking.

## BANKING DETAILS

ACCOUNT NAME	Mpumalanga Helicopter Co.
BANK	First National Bank
BRANCH CODE	271152
ACCOUNT NUMBER	62033100653
TYPE OF ACCOUNT	Cheque
VAT NUMBER	4550123899

## CONTACT DETAILS

RESERVATIONS	Kelly & Eline
TELEPHONE	+27 84 505 2052
E-MAIL	info@mhelicopter.co.za
WEBSITE	www.mhelicopter.co.za

